


# CONSTRUCTION PLANS FOR ROLLING MEADOW PHASE 2A COMMERCIAL ACCESS

Rolling Meadow Limited Partnership  
1002 Arden Way, Signal Mountain, TN 37377

Waverly Municipal Design Standards, adopted December 2002, apply to this project. Copies are available at the  
City of Waverly, Mike Cherry, P.E., City Engineer, 200 1st Street N.E., PO Box 616, Waverly, IA 56077

CITY OF WAVERLY  
APPROVED  
By: Mike Date: 8/17/07

Butch will provide  
signed drawings and  
contractor bonds for Council  
Approval after letting.

	I hereby certify that this plan was prepared by me or under my direct personal supervision and that I am a duly Licensed Professional Engineer under the laws of the State of Iowa.	
	L. William Kehe License number <u>07838</u>	Date: _____
	My registration renewal date is December 31, 2008	
	Pages or sheets covered by this seal: <u>Project 63.9 Sheets 1 thru 10</u>	

CEDAR VALLEY ENGINEERING CO  
CONSULTING ENGINEERS WITH OFFICES IN WAVERLY, IOWA  
2704 Fifth Avenue N.W., P.O. Box 827, Waverly, Iowa 50677 (Phone 319-352-3213, FAX 319-352-2825)

ROLLING MEADOW LLC  
PHASE 2A COMMERCIAL ACCESS  
COVER SHEET  
WAVERLY, IOWA

DATE  
8/2/07

CADD FILE  
10TH ACCESS

SHEET  
ONE  
of  
TEN

PROJECT NO.  
63-9

The Project is to construct a left turn lane, entrance and apron to allow access to Lots A & B of Rolling Meadow, Phase 2A. The Contracting Authority is Rolling Meadow, Limited Partnership, 1002 Arden Way, Signal Mountain, TN 37377. Inspection will be conducted by the City of Waverly.

The Project will be completed in accordance with sheets one through five of the Project Plans. Sheets six through ten are included for reference. The information found on sheets six through ten become part of the contract only if specifically called out on sheets one through five or if parts of sheets six through ten include further references.

The Waverly Municipal Design Standards, December 2002, and the Iowa Department of Transportation Standard Specifications for Highway and Bridge Construction, Series 2001 are part of this contract in the precedenc e as listed.

A record set of project documents for the 10th Ave SW Reconstruction, City of Waverly, prepared by Shive-Hattery, Inc., is available for review at the office of the Director of Public Works, City of Waverly.

The Contractor will be held responsible for compliance with all ordinances of the City of Waverly, regulations and laws of the State of Iowa and the United States of America. The Contracting Authority and its agents will be held harmless by the Contractor from the results of any action taken by the Contractor, its agents, subcontractors, vendors or employees.

The contract will be lump sum for all work payable in monthly amounts based upon the work completed. To establish a schedule of values, a tabulation of estimated project quantities is provided below.

ESTIMATED PROJECT QUANTITIES

Item #	Item	Code	Item		Q
1	2101	850001	Clearing & Grubbing	acre	0.15
2	2102	2710070	Excavation, Class 10, Roadway and Borrow	cy	234.11
3	2105	8425015	Topsoil, Strip, Salvage and Spread	cy	117.06
4	2111	8174100	Granular Subbase	sy	702.33
5	2301	1033060	Std or Slip Form P.C. Concrete Pavement, Class C, Class 3I Durality, 6 in	sy	345.67
6	2301	1034100	Std or Slip Form P.C. Concrete Pavement, Class C, Ciass 3I Durality, 10 in	sy	378.67
7	2301	4875006	Median, P.C. Concrete, 6"	sy	58.67
8	2510	6745850	Removal of Pavement	sy	113.89
9	2527	9263109	Painted Pavement Marking	sta	1.00
10	2527	9263137	Painted Symbols & Legends	ea	1.00
11	2528	8445110	Traffic Control	ls	1.00
12	2533	4980005	Mobilization	ls	1.00

- 1All material may be disposed of within Rolling Meadow Subdivision as directed by the engineer.
- 2Excess material will be stockpiled within Rolling Meadow Subdivision as directed by the engineer.
- 3Excess material will be stockpiled within Rolling Meadow Subdivision as directed by the engineer.
- 4Installation will tie in with exisiting and will extend two feet beyond edge of paving.
- 5Includes all jointing as shown. Joints will be C except at edge of future sidewalk. Sidewalk edge will be a definite construction joint with mastic filler per Waverly Design Standards.
- 6Includes all integral curb and jointing to match existing paving. Finish will be micro texture to match existing.
- 8Includes as incidental approximately 354 lineal feet of full depth saw cut. Swa cuts of one-half depth plus 1" will not be accepted. Also includes approximately 49 lineal feet of curb cut and shaping.
- 9Includes a single solid lane line (10) from Sta 136+00 to Sta 137+00 delineating the left turn lane.
- 10Includes a single left turn arrow (9002) at Sta 136+50.
- 11Tenth Avenue will remain open to traffic during construction. Contractor will submit traffic control plan based upon his operating plans for approval. Controls must be maintained throughout operations.
- 12A 100% performance and payment bond and a two year maintenance bond with the City of Waverly as obligee will be required. Insurance coverage will include the City of Waverly, Rolling Meadow, Limited Partnership and Cedar Valley Engineering Co as additional insureds.

CEDAR VALLEY ENGINEERING CO

CONSULTING ENGINEERS WITH OFFICES IN WAVERLY, IOWA

2704 Fifth Avenue N.W., P.O. Box 827, Waverly, Iowa 50677 (Phone: 319-352-3213, FAX 319-352-2825)

ROLLING MEADOW LLC

PHASE 2A COMMERCIAL ACCESS

SPECIFICATIONS & NOTES

WAVERLY, IOWA

DATE

8/3/07

CADD FILE

100% ALLOC

SHEET

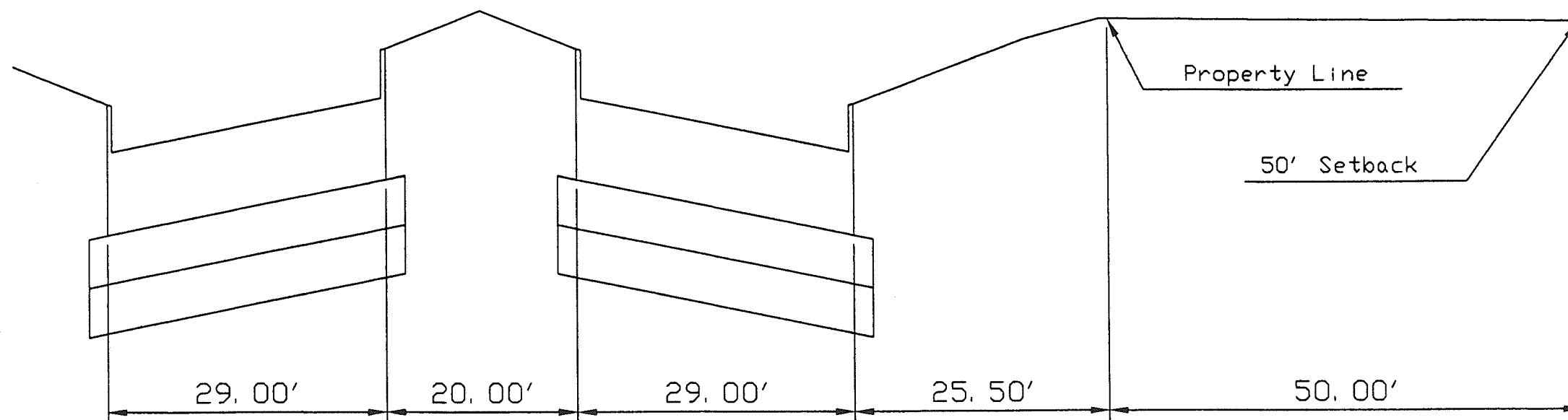
TWO

OF

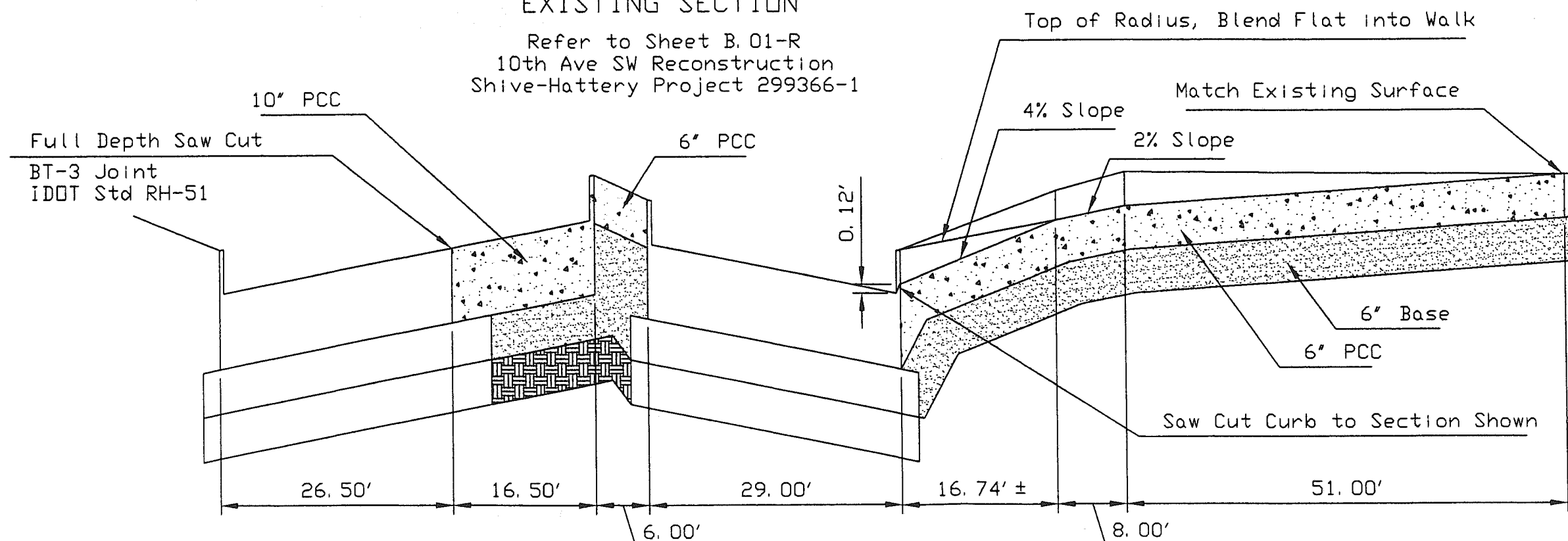
TEN

PROJECT NO.

63-9

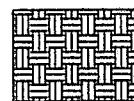


Refer to Sheet B.01-R  
10th Ave SW Reconstruction  
Shive-Hattery Project 299366-1



### NEW DESIGN SECTION

Similar to Sheet B.02-R  
10th Ave SW Reconstruction  
Shive-Hattery Project 299366-1  
Follow Project Details UND



Scarify & Recompact  
6' to 98% Std Proctor

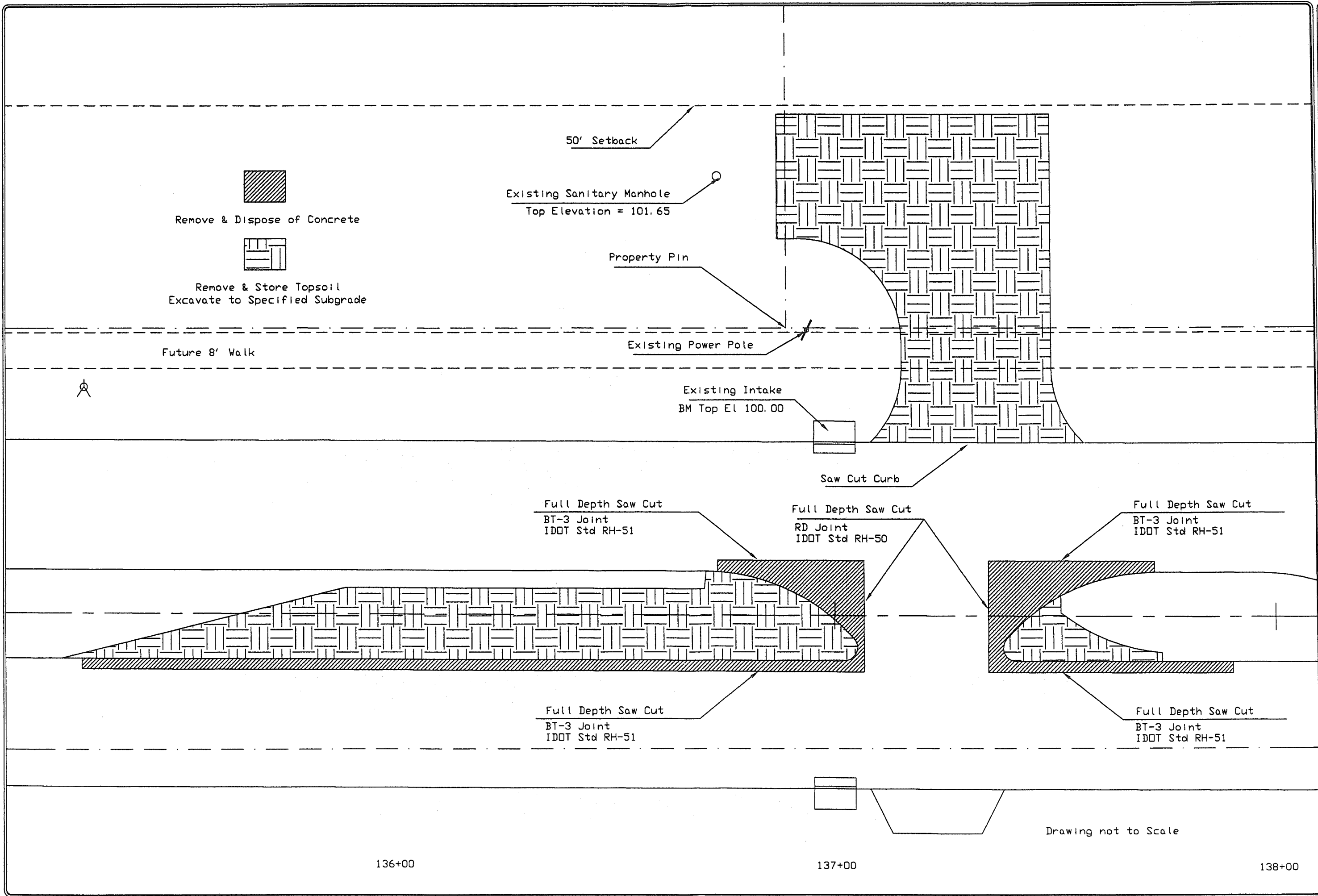


6" Granular Base  
IADOT Gradation #12



PCC Concrete  
IADOT C4 Class 3 Aggregate

Drawing not to Scale  
Vertical Distortion 10:1



✕ 101.10 Design Grade  
100.84 Existing Grade

50' Setback

Existing Sanitary Manhole  
Top Elevation = 101.65

Property Pin

Future 8' Walk will be tapered down to match drive at 1/20 slope

Existing Intake  
BM Top El 100.00

C Joint, IDOT Std RH-50  
Typical of all 6' PCC Pavement

Construction Joint  
Refer to Waverly Design Standards

6' Median Concrete

BT-3 Joint  
IDOT Std RH-51

RD Joint  
IDOT Std RH-50

BT-3 Joint  
IDOT Std RH-51

6' Std Curb

10' PCC

10' PCC

10' PCC

6' Std Curb

CD Joint IDOT Std RH-50  
Align with Existing (typ)

BT-3 Joint  
IDOT Std RH-51

BT-3 Joint  
IDOT Std RH-51

136+00

137+00

138+00

Drawing not to Scale

CEDAR VALLEY ENGINEERING CO  
CONSULTING ENGINEERS WITH OFFICES IN WAVERLY, IOWA  
2704 Fifth Avenue N.W., P.O. Box 827, Waverly, Iowa 50677 (Phone 319-352-3213, FAX 319-352-2825)

ROLLING MEADOW LLC  
PHASE 2A COMMERCIAL ACCESS  
PAVING PLAN  
WAVERLY, IOWA

DATE  
8/3/07

CADD FILE  
15TH ACCESS

SHEET  
FIVE  
OF  
TEN

PROJECT NO.  
65-9