

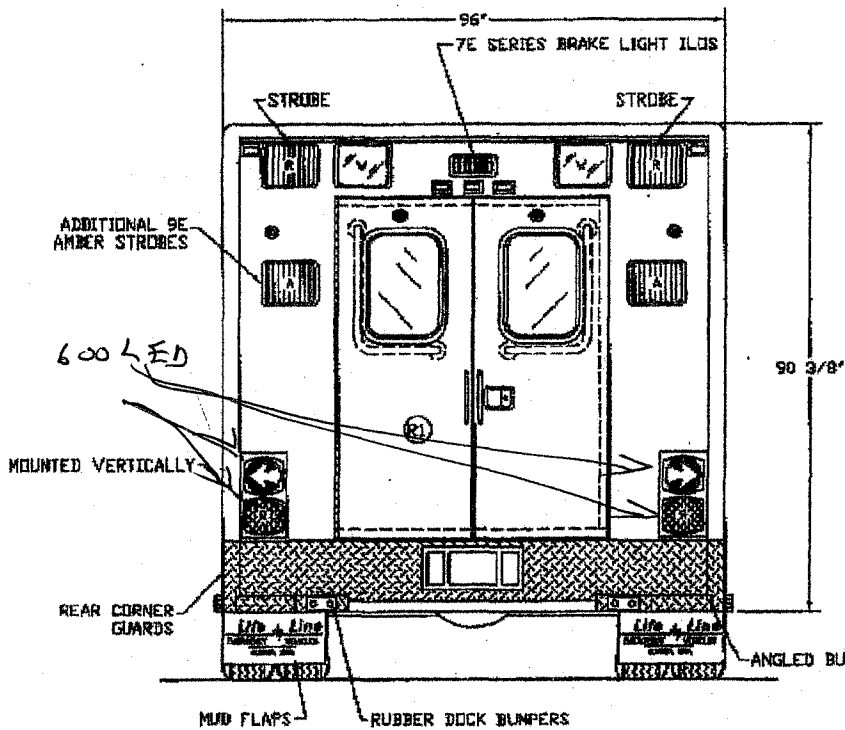
STREET SIDE

NOTE: SHIP SPARE TIRE LOOSE

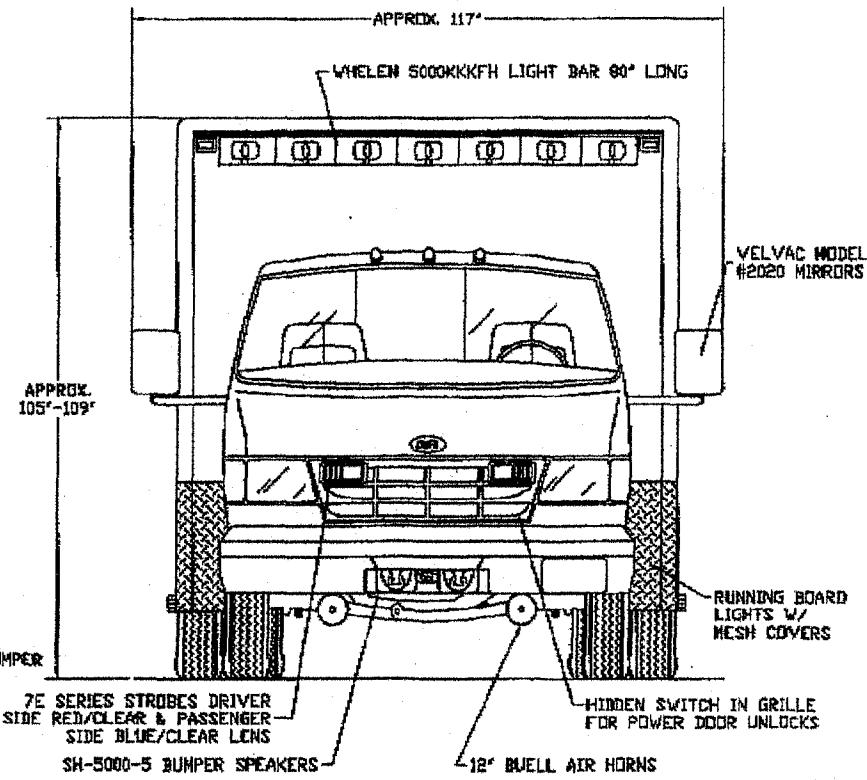
COMPT.	INTERIOR HEIGHT	PASS-THRU HEIGHT	INTERIOR WIDTH	PASS-THRU WIDTH	DEPTH	DESCRIPTION
D1	80"	79"	17 1/2"	15"	19 1/4"	"M" TANK STORAGE
D2	33"	32"	50 1/2"	43"	17 3/4"	STORAGE
D3	33"	32"	39 1/2"	32"	17 3/4"	STORAGE

Life Line	
EMERGENCY VEHICLES	
COMPUTER DESIGNED	
167" ESD SUPERLINER 72" HEADROOM	
FOR WAVERLY MUNICIPAL HOSPITAL	
SCALE: 1" = 32"	DRAWN BY: R.B.
DATE: 1-29-01	REVISED: ---
APPROVED BY:	DRWG NO. 1264SADE

LIFELINE EMERGENCY VEHICLES
 1000 W. 10th St. • Topeka, KS 66604
 TEL: 785-233-1100
 FAX: 785-233-1101



REAR



FRONT

COMPT.	INTERIOR HEIGHT	PASS-THRU HEIGHT	INTERIOR WIDTH	PASS-THRU WIDTH	DEPTH	DESCRIPTION
R1	72 1/4"	60"	49 3/4"	49 3/4"	- - -	REAR ENTRANCE

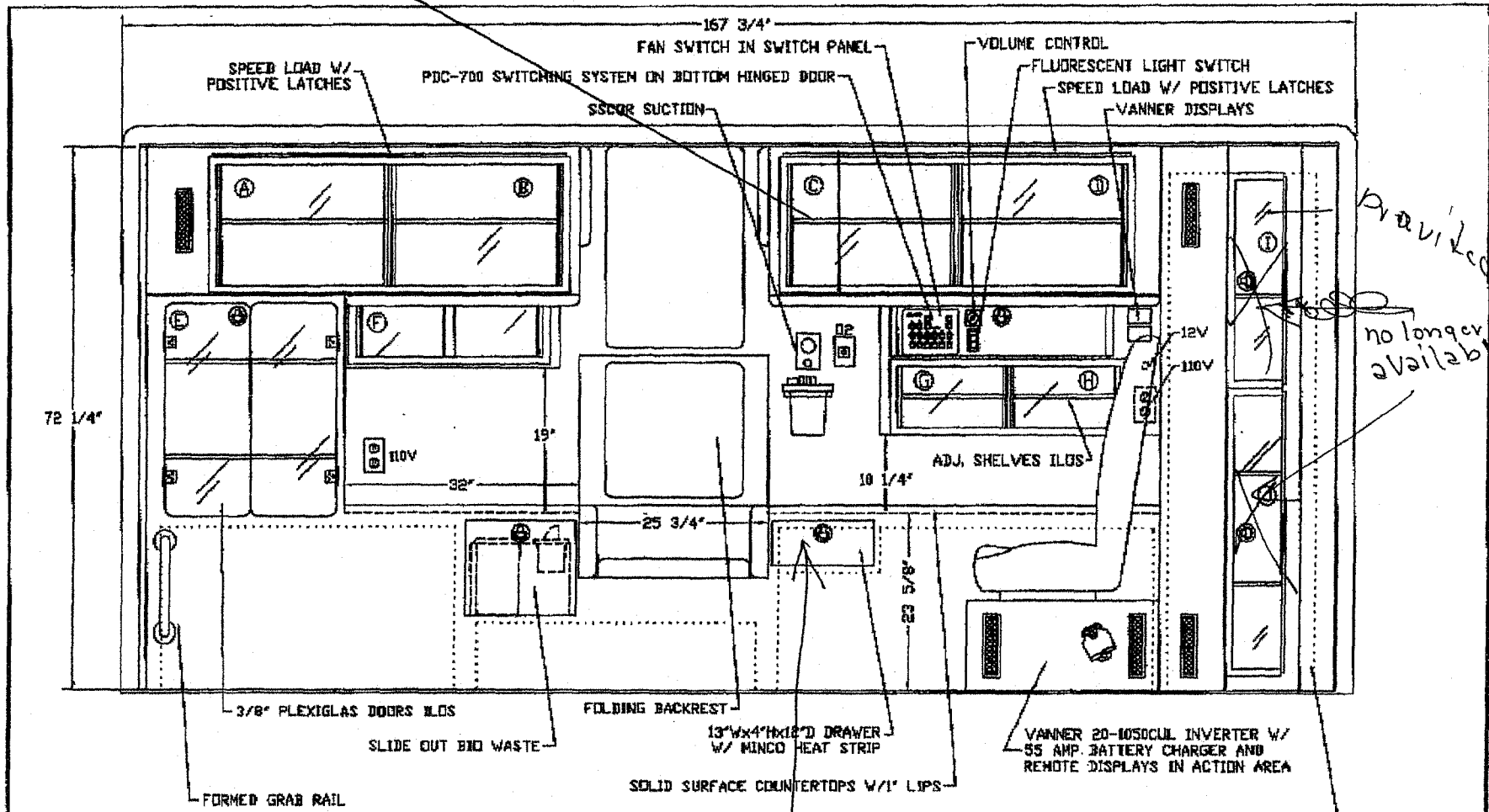
Life Line
EMERGENCY VEHICLES
COMPUTER DESIGNED

**167" ESD SUPERLINER 72" HEADROOM
FOR WAVERLY MUNICIPAL HOSPITAL**

SCALE: 1" = 32"	DRAWN BY: R.B.
DATE: 1-29-01	REVISED: ---
APPROVED BY: _____	DRWG NO. 1264SADE

PART: LIFE LINE EMERGENCY VEHICLES
 1-29-01
 R.B.
 1264SADE

Slanted locking cabinet



provided
no longer available

LEFT SIDE

MEASUREMENTS GIVEN ARE ESTIMATED INTERIOR COMPARTMENT DIMENSIONS.

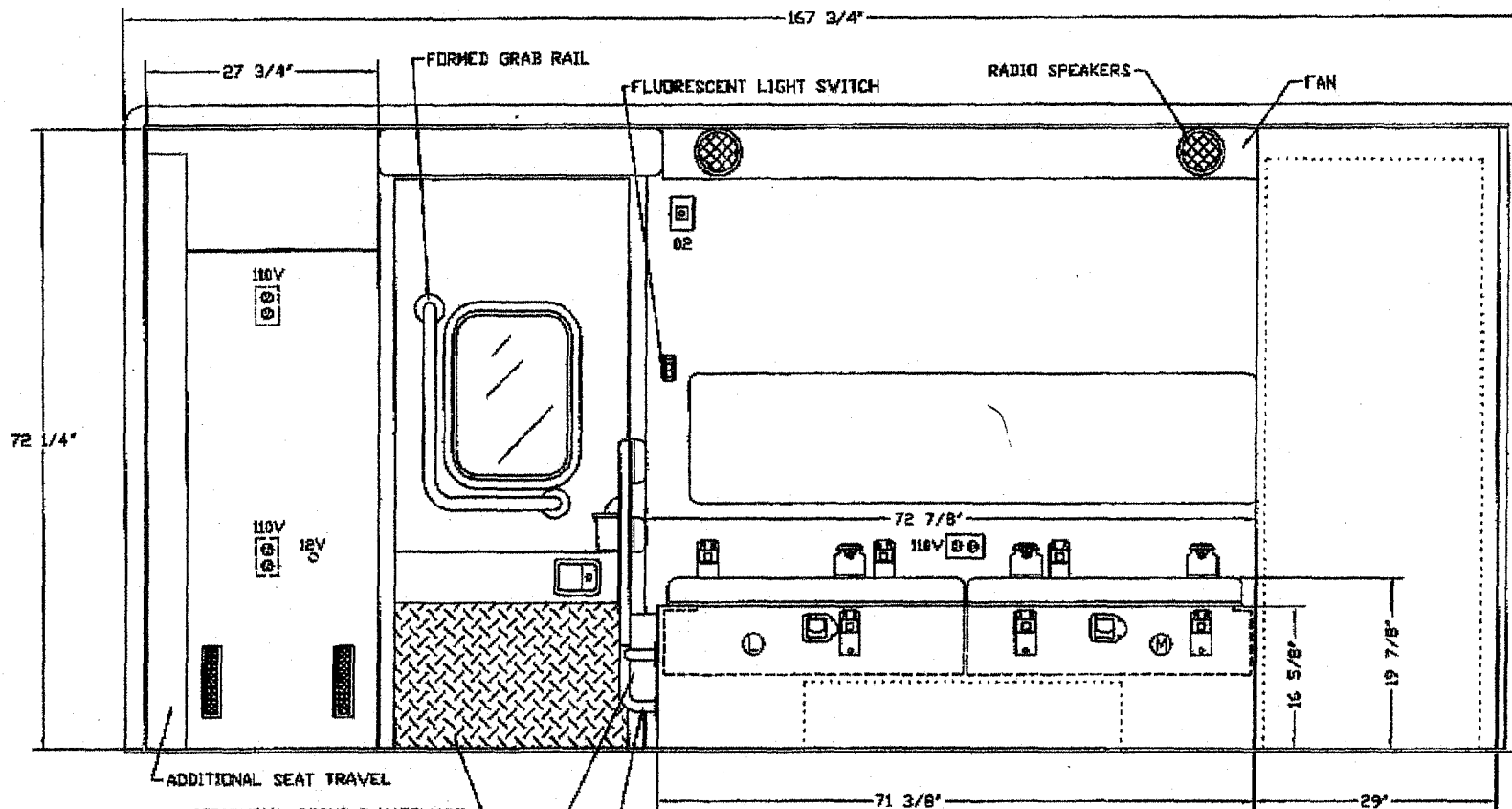
CABINET	HEIGHT	WIDTH	DEPTH	DESCRIPTION
A	18 3/4"	22 1/4"	18 1/4"	STORAGE
B	18 3/4"	22 3/8"	18 1/4"	STORAGE
C	18 3/4"	21"	18 1/4"	STORAGE
D	18 3/4"	21"	18 1/4"	STORAGE
E	28 3/4"	26"	18 1/4"	STORAGE
F	8 3/4"	28"	8 1/2"	STORAGE
G	9"	15"	4 1/2"	STORAGE
H	9"	15"	4 1/2"	STORAGE
I	23 3/4"	9"	16"	STORAGE
J	37"	9"	16"	STORAGE

18" wide
in lieu
of
1311

Life Line
EMERGENCY VEHICLES
COMPUTER DESIGNED

**167" ESD SUPERLINER 72" HEADROOM
FOR WAVERLY MUNICIPAL HOSPITAL**

SCALE: 1 = 195	DRAWN BY: R.B.
DATE: 1-25-01	REVISED: ---
APPROVED BY: <i>[Signature]</i>	DRWG NO. 1264SADI



ADDITIONAL SEAT TRAVEL
 ADDITIONAL DOCKING HARDWARE
 FOR REMOVABLE "A" BAR
 GLOVE BUTLER BETWEEN RAILS

FORMED RAIL W/ SHARPS AND 2 PADS,
 TOP PAD 5" AND BOTTOM PAD 4" HIGH
 W/ 4" BETWEEN THE PADS TO
 ACCESS SHARPS WHICH OPENS
 TOWARDS THE REAR OF THE BENCH

RIGHT SIDE

MEASUREMENTS GIVEN ARE ESTIMATED INTERIOR COMPARTMENT DIMENSIONS.

CABINET	HEIGHT	WIDTH	DEPTH	DESCRIPTION
L	7 9/16"	35 1/2"	18 3/4"	STORAGE
M	7 9/16"	33 1/2"	18 3/4"	STORAGE

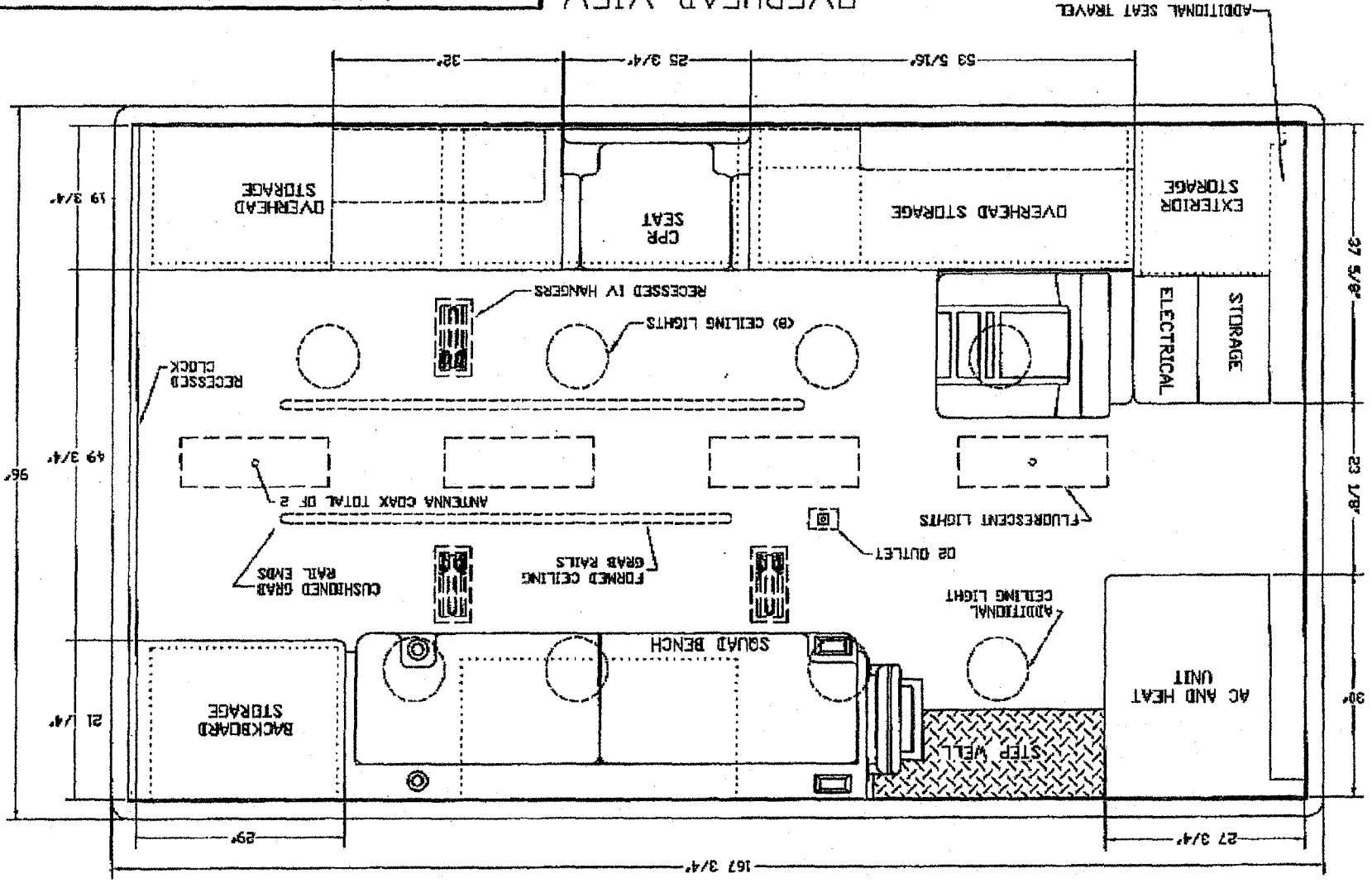
Life Line
 EMERGENCY VEHICLES
 COMPUTER DESIGNED

**167" ESD SUPERLINER 72" HEADROOM
 FOR WAVERLY MUNICIPAL HOSPITAL**

SCALE: 1 = 195	DRAWN BY: R.B.
DATE: 1-25-01	REVISED: ---
APPROVED BY:	DRWG NO. 1264SADI

Life M Line
EMERGENCY VEHICLES
COMPUTER DESIGNED
167th ESD SUPERLINER 72" HEADROOM
FOR WAVERLY MUNICIPAL HOSPITAL
 SCALE: 1 = 19.5
 DRAWN BY: R.B.
 DATE: 1-25-01
 APPROVED BY: _____
 DRWG NO. 1264SADI

OVERHEAD VIEW



GENERAL INFORMATION SHEET

SERVICE FACILITIES: Emergency Vehicle Sales & Service, Alexander, Iowa

MANUFACTURER FACILITIES: Life Line Emergency Vehicles, Sumner, Iowa

LIFE LINE WARRANTIES:

MODULE: Lifetime to original owner

ELECTRICAL: 6 Years/72,000 Miles

PAINT WARRANTY: 3 Years. By DuPont

CABINET CONSTRUCTION: 15 Years

PRODUCT WARRANTY: 5 Years/60,000 Miles

CHASSIS: STANDARD FORD WARRANTY: 36 Months/36,000 Miles. Bumper to Bumper.

FORD CORROSION WARRANTY: 6 Years/100,000 Miles.

FORD TURBO DIESEL: 5 Years/100,000 Miles.

REFERENCES TO EMERGENCY VEHICLE SALES & SERVICE AND TO LIFE LINE:

Iowa County Ambulance Service
300 May St.
Marengo, Iowa 52301
Terry Brecht
319-642-5543 Three Units

Johnson County Emergency Ambulance
808 South Dubuque
Iowa City, Iowa 52240
Dave Dvorsky
319-356-6013 Three Units

Mercy Medical Center – Centerville
St. Joseph's Drive
Centerville, Iowa 52544
Dennis Sturms
515-437-4111 Two Units

Des Moines Fire Dept.
9th & Mulberry St.
Des Moines, Iowa 50309
Dave Harmon
515-283-4247 Eight Units

West Des Moines EMS
3421 Ashworth Road
West Des Moines, Iowa 50265
Jeff Dumermuth
515-223-3252 Two Units

Area Ambulance Service
701 10th St. SE
Cedar Rapids, Iowa 52403
Bob Ugarph
319-369-4541 Eight Units

Le Mars Ambulance
40 Central Ave. SE
Le Mars, Iowa 51031
Bill Rosacker
712-546-4175 One Unit

Mary Greeley Medical Center
1111 Duff Ave.
Ames, Iowa 50010
Marilyn Polito
515-239-2011 Five Units

Boone County Hospital
1015 Union St.
Boone, Iowa 50036
Louis Greco
515-433-8190 Three Units

Tabor Ambulance Service
PO Box 309
Tabor, Iowa 51653
Pat Weldon
712-629-2295 One Unit

VEHICLE LOANER: Loaner ambulance supplied if customer ambulance is out of service for an extended time. No charge, but customer must provide insurance. Limited to vehicles purchased from Emergency Vehicle Sales & Service.

EQUIPMENT LOANER: Loaner equipment provided if delayed service is required. (Siren, inverter, etc.)